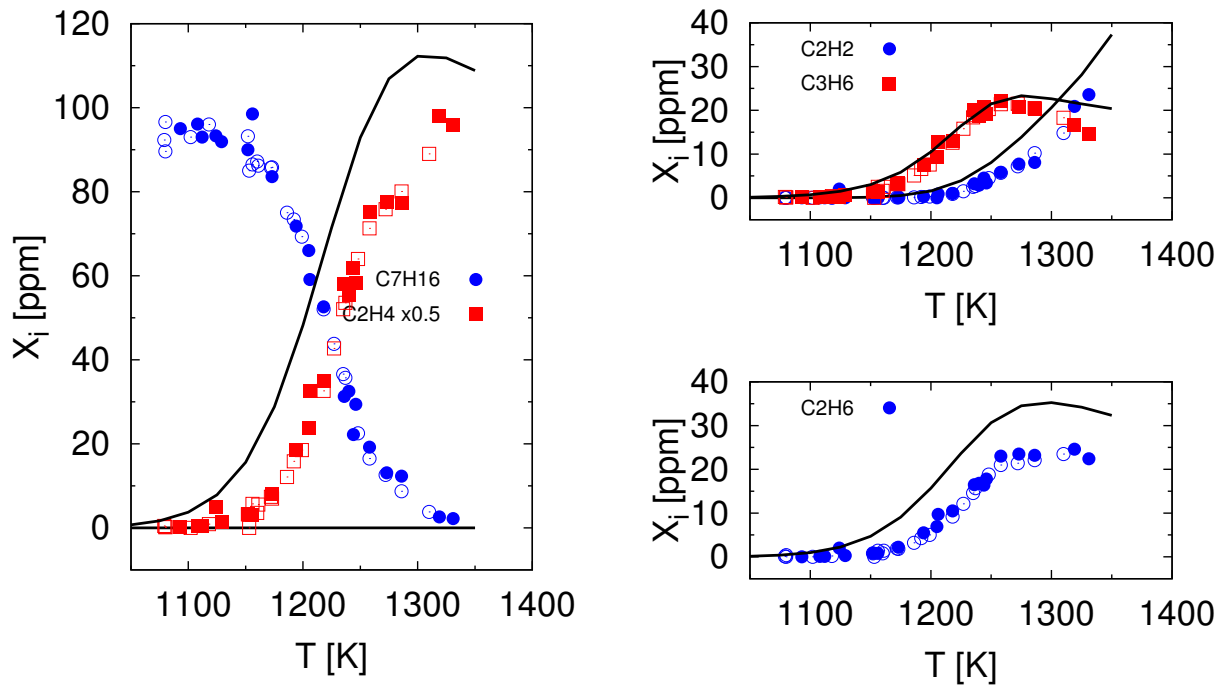


Species profiles in shock tubes



Species distribution during pyrolysis in a shock tube. Residence time and initial pressures as specified in Ref., 100ppm C_7H_{16} in Ar. Closed symbols 25bar, open symbols 50bar.

References

- [1] S. Garner, R. Sivaramakrishnan, K. Brezinsky, The high-pressure pyrolysis of saturated and unsaturated C_7 hydrocarbons, Proc. Comb. Inst. 32 (2009) 461–467.