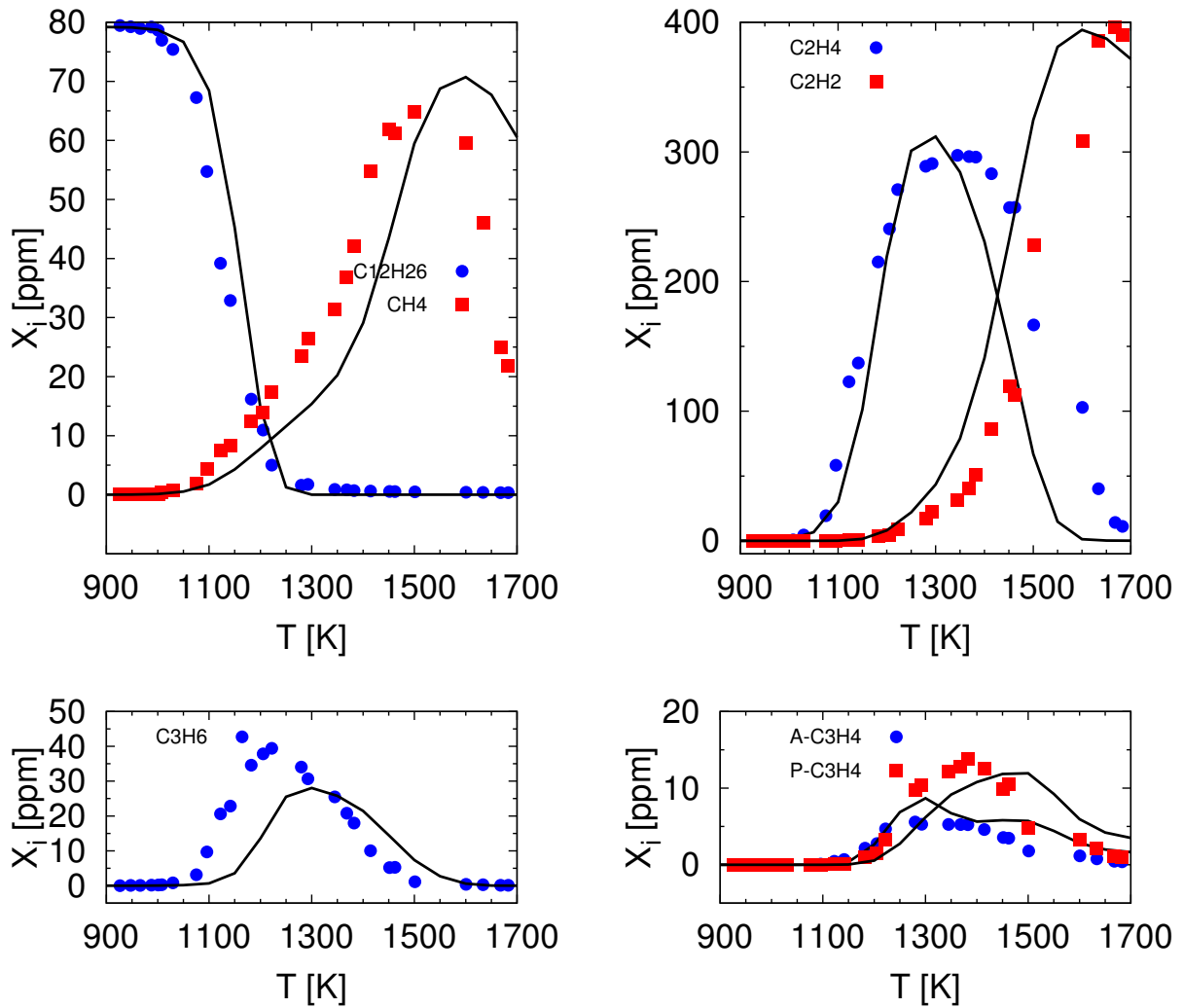


Species profiles in shock tubes



Species distribution during pyrolysis in a shock tube. Residence time as specified in Ref., 79.2ppm $C_{12}H_{16}$ in Ar at 50bar.

References

- [1] T. Malewcki, K. Brezinsky, Experimental and modeling study on the pyrolysis and oxidation of n-decane and n-dodecane, Proc. Comb. Inst. 34 (2013) 361-368.